



# X-PORTE





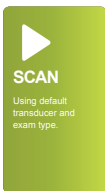
TECHNOLOGY DRIVEN  
5-YEAR STANDARD WARRANTY  
MADE IN THE USA

## The World's First Ultrasound Kiosk

X-Porte represents an entirely new approach to clinical ultrasound. Its imaging, features, and educational resources are fluidly brought together in a convenient, all-in-one kiosk design.

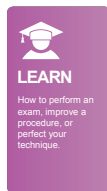
At the sweep of your hand, it responds so quickly and intelligently to your imaging needs, you'll know it was created precisely for professionals like you. Its self-explanatory control panel makes system navigation a breeze, and its sealed touch screen has no buttons for pathogens to hide behind.

X-Porte's slender profile makes it easy to maneuver alongside beds and exam tables for point-of-care visualization and procedures. For portability and durability during transport, its screen folds down and its stand lowers making X-Porte even more compact for navigating busy corridors. The X-Porte ultrasound core can be detached easily from the kiosk to provide another configuration option. For servicing, nothing could be more convenient than X-Porte's five-year warranty and removable engine.



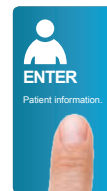
### Breakthrough XDI Imaging

X-Porte's XDI beam-forming technology was created to meet the challenge of side-lobe artifacts, so now you can scan with image clarity, resolution, and color sensitivity never before seen in point-of-care ultrasound systems.



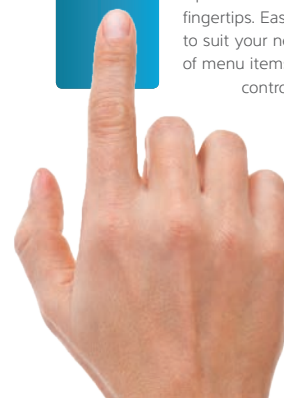
### Real-Time Scan Along Learning

For instant reference, scan along with an onboard library of Visual Guides featuring step-by-step learning tutorials. Use X-Porte's Visual Guides for comparing 3D beam-direction animations to corresponding 2D ultrasound images.

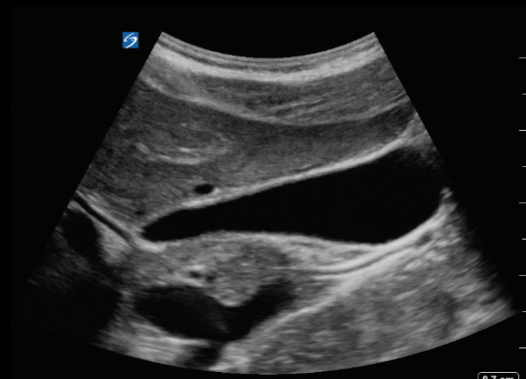


### Gesture-Driven Interface

Optimized workflow is always at your fingertips. Easily customize the interface to suit your needs. Don't like the order of menu items? Change them. Too many controls? Minimize them.



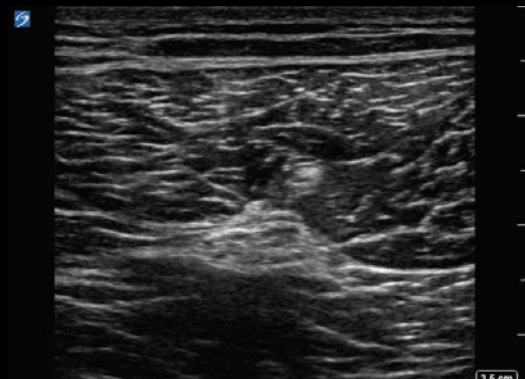
One look and the difference is clear—XDI patent-pending imaging technology drives X-Porte's image clarity and resolution by significantly reducing visual clutter.



SonoSite  
C80xp/5-2 Abdomen  
MI: 1.1 TIS: 0.2

8.7 cm  
2D: G: 52  
DR: 0  
MB  
THI

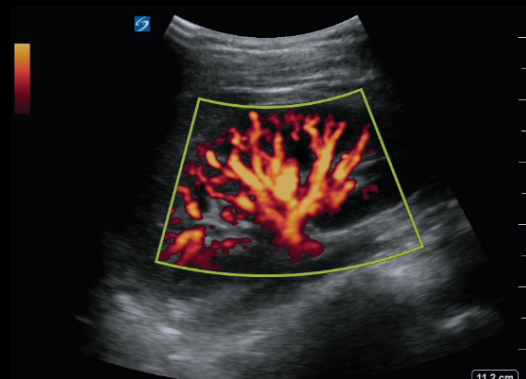
**GALLBLADDER**



SonoSite  
HFL38xp/13-6 Nerve  
MI: 0.6 TIS: 0.3

3.6 cm  
2D: G: 50  
DR: 0  
MB

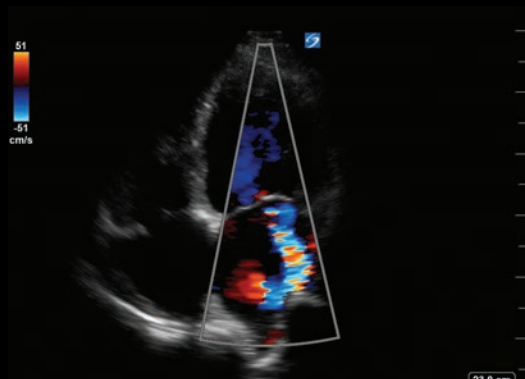
**SCIATIC NERVE**



SonoSite  
C80xp/5-2 Abdomen  
MI: 0.9 TIS: 0.5

11.2 cm  
CPD: G: 50  
Med  
817Hz  
2D: G: 55  
DR: 0

**KIDNEY BLOOD FLOW**



SonoSite  
P21xp/5-1 Cardiac  
MI: 0.8 TIS: 0.8

51  
-51  
cm/s  
23.0 cm  
Color: G: 64  
Med  
2778Hz  
2D: G: 47  
DR: 0  
THI

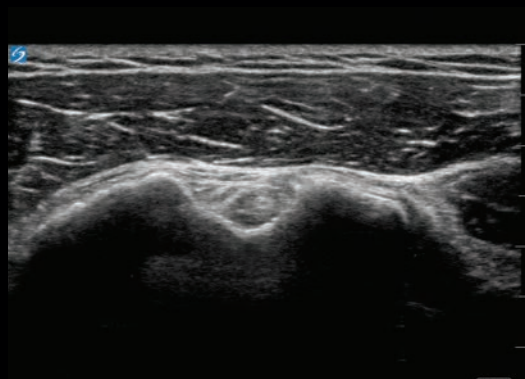
**APICAL MITRAL FLOW**



SonoSite  
C80xp/5-2 Obstetrics  
MI: 1.0 TIB: 0.2

16.2 cm  
2D: G: 41  
DR: 0  
MB  
THI

**FETAL PROFILE**



SonoSite  
HFL50xp/15-6 Musculoskeletal  
MI: 0.5 TIS: 0.4

3.1 cm  
2D: G: 39  
DR: 0  
MB

**BICEPS TENDON**



C11xp

Applications:  
abdominal, arterial, neonatal,  
nerve, venous  
8-5 MHz Curved  
Scan depth: 15 cm



C35xp

Applications:  
abdominal, musculoskeletal,  
nerve  
8-3 MHz Curved  
Scan depth: 16 cm



C60xp

Applications:  
abdominal, gyn,  
musculoskeletal, nerve, ob  
5-2 MHz Curved  
Scan depth: 30 cm



ICTxp

Applications:  
gyn, ob  
9-5 MHz Curved  
Scan depth: 15 cm



P10xp

Applications:  
abdominal, cardiac, neonatal  
8-4 MHz Phased  
Scan depth: 15 cm



P21xp

Applications:  
abdomen, cardiac, lung, ob,  
orbital, TCD  
5-1 MHz Phased  
Scan depth: 35 cm



HFL38xp

Applications:  
arterial, breast, lung,  
musculoskeletal, nerve,  
small parts, venous  
13-6 MHz Linear  
Scan depth: 6 cm



HFL50xp

Applications:  
breast, musculoskeletal, nerve,  
small parts  
15-6 MHz Linear  
Scan depth: 6 cm



HSL25xp

Applications:  
arterial, lung, musculoskeletal,  
nerve, ophthalmic, superficial,  
venous  
13-6 MHz Linear  
Scan depth: 6 cm



L25xp

Applications:  
arterial, lung, musculoskeletal,  
nerve, ophthalmic, superficial,  
venous  
13-6 MHz Linear  
Scan depth: 6 cm



L38xp

Applications:  
arterial, lung, nerve, small  
parts, venous  
10-5 MHz Linear  
Scan depth: 9 cm



TEExp

Applications:  
cardiac  
8-3 MHz Phased  
Scan depth: 18 cm

Needle guides and kits available with the following transducers:  
C35xp, C60xp, HFL38xp, HFL50xp, ICTxp, L25xp, L38xp, P10xp, and P21xp.  
A transverse needle guide is available with the L25xp.





Designed from the ground up for your work style and work environment, X-Porte offers you an entirely new ultrasound experience by providing these revolutionary tools in a unique, integrated system exclusive to SonoSite.

## SYSTEM SPECIFICATIONS

Stand Dimensions: 26.4" L x 21.2" W  
Stand Height: max 64" (monitor up) / min 42.2" (monitor down)  
Height Adjustment: 9" travel  
12.1" Capacitive Touch Screen (multi-touch gestures for system controls)  
System Boot Up: <20 secs  
HD Monitor: 19" diagonally  
Control Panel Tilt Adjustment: 0 to 110 degrees  
Clinical Monitor Viewing: 85 degrees left and right, 85 degrees up, 85 degrees down  
Architecture: All digital broadband  
Dynamic Range: Up to 183 dB  
Gray Scale: 256 shades  
HIPAA Compliance: Comprehensive toolset

## IMAGE MODES

2D Broadband Imaging  
Tissue Harmonic Imaging  
Pulse Inversion Harmonic Imaging  
M Mode (update and simultaneous)  
Velocity Color Doppler  
Color Power Doppler  
Pulsed Wave Doppler  
Pulsed Wave Tissue Doppler  
Continuous Wave Doppler, ECG

## IMAGE PROCESSING

Extreme Definition Imaging (XDI)  
SonoAdapt Tissue Optimization  
SonoHD2 Imaging Technology  
SonoMB Multibeam Technology  
Dual Imaging  
Dual Color Imaging  
AutoGain and AutoGain Brightness Adjust  
Restore Default Gains  
Dynamic Range  
Duplex Imaging  
8x Zoom Capability  
Cine Processing: Dynamic Range, Zoom

2D Image Optimization: Average and Difficult  
Overall Gain, Near and Far Field Gain Control  
Color and Doppler Flow Optimization (low, medium, high)  
Color Variance Mode  
2D Reduced Imaging Sector

## STEEP NEEDLE PROFILING

(Available on these transducers and exams.)  
HFL50xp: Breast, MSK, Nerve, Small Parts  
L38xp: Arterial, Nerve, Small Parts, Venous  
L25xp: Arterial, Nerve, MSK, Venous  
HSL25xp: Arterial, MSK, Nerve, Venous  
HFL38xp: Arterial, Breast, MSK, Nerve, Small Parts, Venous  
C60xp: MSK, Nerve  
C35xp: MSK, Nerve

## POWER SUPPLY

System operates via battery or AC power  
Rechargeable Lithium-ion Battery  
Battery Life: 1.0 hour, 3 days on idle  
Battery charges to 80% capacity in 3 hours

## OTHER HIGHLIGHTS

Programmable Controls  
Labeling: Predefined Labels, Customized Labels, Predefined Pictograms  
Worksheets: Acute Care Worksheets (ACEP Guidelines) and Musculoskeletal Worksheets  
Steep Needle Profiling Software  
\*Embedded DVR (digital video recorder)  
\*Triple Transducer Connect  
\*Storage Basket  
\*VGA Video Out  
\*Standard with X-Porte

## ONBOARD IMAGE AND CLIP STORAGE REVIEW

2D Cine Review – 20 seconds  
PW, CW, M Mode Cine Review – 16 seconds  
Internal Flash Memory – 64 GB  
Thumbnail review of saved images and clips

Prospective and Retrospective Clip Store  
Auto Clip Export (auto export to USB at end of study)  
Video clip playback at 1, ½ or ¼ of the captured rate  
Video Clip Save Lengths: 2, 4, 6, 10, 15, 30 and 60 seconds.  
Annotations on recalled images  
Image Format: JPEG, AVI, BMP  
Export Format: HTML  
JPEG Compression Options: High, Medium, Low

## DATA MANAGEMENT AND WIRELESS

5 USB 2.0 Ports  
Ethernet Port  
DVR USB Port  
ECG Connector  
Bar Code Auto-query (populates patient's demographic from worklist)  
DICOM Image Management: Print, Store, Modality Worklist, Perform Procedure Step (PPS), Storage Commitment  
DICOM Image Management: Exam Routing for Diagnostic, Procedure, Education Exams  
Wireless: 802.11 (B, G, and N networking)

## ACCESSORIES

Medical Grade Black and White Printer  
USB Bar Code Reader  
Footswitch  
ECG Module

## SUPPORTED LANGUAGES

English, French, Italian, Portuguese, Spanish, German

## ONBOARD GUIDES

Ultrasound Imaging Basics, Packages for Acute Care, MSK, Procedures, Anesthesiology  
On-board System Help

Note: Desktop configuration available.



FUJIFILM SonoSite, Inc.  
Worldwide Headquarters  
21919 30th Drive SE, Bothell, WA 98021-3904  
Tel: +1 (425) 951-1200 or +1 (877) 290-4911  
Fax: +1 (425) 951-6800  
[www.sonosite.com/products/x-porte](http://www.sonosite.com/products/x-porte)

### SonoSite Worldwide Offices

FUJIFILM SonoSite Africa Ltd ..... +254 20-2710801  
FUJIFILM SonoSite Australasia Pty Ltd: Australia ..... 1300-663-516  
FUJIFILM SonoSite Australasia Pty Ltd: New Zealand ..... 0800-888-204  
FUJIFILM SonoSite Brazil ..... +55 11-5574-7747  
FUJIFILM SonoSite Canada Inc. .... +1 888-554-5502  
FUJIFILM SonoSite GmbH – Germany ..... +49 69-80-88-40-30  
FUJIFILM SonoSite Iberica SL – Spain ..... +34 91-123-84-51  
FUJIFILM SonoSite, Inc. – USA ..... +1 425-951-1200  
FUJIFILM SonoSite, Inc. – Russia ..... +7 495-775-6964

FUJIFILM SonoSite India Pvt Ltd ..... +91 124-288-1100  
FUJIFILM SonoSite Italy S.r.l. .... +39 02-9475-3655  
FUJIFILM SonoSite Japan K.K. .... +81 3-5304-5337  
FUJIFILM (China) Investment Co., Ltd ..... +86 21-5010-6000  
FUJIFILM SonoSite Ltd – United Kingdom ..... +44 1462-341151  
FUJIFILM SonoSite SARL – France ..... +33 1-82-88-07-02  
FUJIFILM SonoSite Singapore Pte Ltd ..... +65 6380-5589  
FUJIFILM SonoSite Korea Ltd ..... +65 6380-5589