

Sonosite ST

Procedural partner | Designed for efficiency



Sonosite ST

Procedural partner | Designed for efficiency.

The assurance you're looking for in medical imaging is here. With its large all-touchscreen display, Sonosite ST is engineered to enhance the way you approach point-of-care ultrasound procedures.

Featuring an intuitive user interface for optimal workflows, Sonosite ST connects clinicians to the needs of patients with nimble performance and precision, helping you move forward with confidence.



From decades of industry insight and innovation, Sonosite ST is meticulously designed for the demands of the job. Engineered to advance from diagnosis to procedure enabling clinicians to act with confidence at every turn.



Sonosite image clarity.

With its sleek all-touchscreen interface, Sonosite ST incorporates the image clarity you have come to know and rely on from a Sonosite system.

Workflow simplified.

Information at your fingertips — with its intuitive interface, Sonosite ST exists to guide and be guided all while improving workflows, giving you time to do more of what you do best, providing patient care.



Streamlined design.

Sonosite ST is designed to accommodate how you move and where you go — engineered to adjust to the needs of the patient and procedure, putting all the tools in all the right places.

Insight in hand.

21" portrait display

Touchscreen display with large clinical image area and one-touch cleaning mode.

Optimized exam types

Surface most needed imaging controls, annotations and measurements to simplify workflow.

Quick data entry

Simplified patient information screen to assist procedural users' workflow.

Easy access transducer holders

Integrated holders for simplified clean up and ease of use.

Needle Guide Starter Kits

Needle Guide Starter Kits improve positioning to help guide needles to an exact target on the first attempt.

One-step adjustable height

System height can be raised or lowered for a wide range of users.

Data management and connectivity

Wi-Fi, ethernet port, 1080p digital video output compatible with 1080p displays, (2) USB 2.0 ports, (2) USB 3.0 ports, (1) dedicated USB port for optional printer.



Versatile storage solutions

Choose different sized storage bins and left or right-sided gel/wipes holder configurations to best suit your workflow needs.



Optional large storage bin

Power cord management

Prevent tangles with power cords confined within the stand column.

Medical Grade Printer

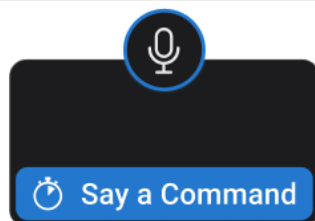
Add the optional Black and White Printer to print ultrasound studies.

Low-profile wheelbase

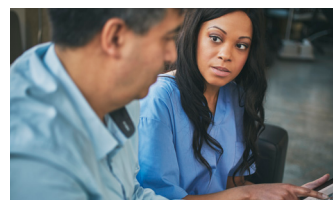
Enables you to position the system close to the bedside for better access to care.



Integrate medical informatics
Sonosite Synchronicity™ workflow manager supports seamless credentialing, quality assurance, and billing. Compile data from all connected point-of-care ultrasound systems into a central location.



Sonosite Voice Assist
Hands free system controls for common modes and features providing you the ability to complete procedures without assistance or in a sterile environment.



Education at your fingertips
Sonosite is dedicated to clinician education. More than 150 scan-along education tutorials are onboard for COVID-19, diagnosis, procedures, pathology, system and transducer use.



Rest assured with data security
Sonosite ST includes robust security features to keep patient information safe and networks secure. The system meets FIPS199, FIPS200, and NIST 800-53.

Scan with confidence.

Available Transducers



C5-1 ●

5-1 MHz Curved

Scan depth: 4.7–30 cm

Exam types:

Abdomen, Procedural Abdomen, Gynecology, Lung, Musculoskeletal, Nerve, Early Obstetrics, Obstetrics, Spine



C10-3 ●

10-3 MHz Curved

Scan depth: 3–18 cm

Exam types:

Abdomen, Gynecology, Lung, Nerve, Musculoskeletal, Spine



P5-1

5-1 MHz Phased

Scan depth: 5–35 cm

Exam types:

Abdomen, Pediatric Abdomen, Cardiac, Pediatric Cardiac, Focused Cardiac, Lung, Obstetrics, Orbital, Transcranial Doppler (TCD)



L12-3 ●

12-3 MHz Linear

Scan depth: 1.5–9 cm

Exam types:

Arterial, Breast, Carotid, Lung, Musculoskeletal, Nerve, Ophthalmic, PIV, Superficial, Venous



L13-6

13-6 MHz Multi

Scan depth: 1–6 cm

Exam types:

Musculoskeletal, PIV, Superficial, Venous



L15-4 ●

15-4 MHz Linear

Scan depth: 1.5–6 cm

Exam types:

Arterial, Breast, Carotid, Musculoskeletal, Nerve, Superficial, Venous



L19-5 ●●

19-5 MHz Linear

Scan depth: 1–6 cm

Exam types:

Arterial, Lung, Musculoskeletal, Nerve, Ophthalmic, PIV, Superficial, Vascular Access, Venous



IC10-3 ●

10-3 MHz Curved

Scan depth: 3–15 cm

Exam types:

Gynecology, Early Obstetrics, Obstetrics, Prostate

Optional Needle Guide Starter Kit

- CIVCO Infiniti Plus™ In-Plane Ultrasound Needle Guide
- CIVCO AccuSITE™ Out-of-Plane Ultrasound Needle Guide
- CIVCO Disposable Endocavity Needle Guide

Enhanced point-of-care ultrasound for your medical specialty

Anesthesia

Equipping care providers with procedural insight.

Sonosite ST provides a large portrait touchscreen display, giving clinicians an immersive experience to help guide procedures and assessments such as regional nerve blocks and gastric volume.

Expanded visibility.

Sonosite image clarity helps you distinguish anatomical details, supporting needle precision and accuracy. Housed in a seamless form factor, the 21" touchscreen displays a large clinical image that is easily visible from across the bed.

Auto Steep Needle Profiling (SNP).

With the touch of a button, the Auto Steep Needle Profiling assists clinicians to guide needle placement for more precise blocks and injections.

Musculoskeletal

Designed to bring clinicians closer.

Supporting Sports Medicine, Orthopedics, Physiatry, Rheumatology and other related specialties to help you accurately diagnose and treat a variety of functional conditions involving tendons, ligaments, muscles, bursae, joints, cartilage, or peripheral nerves.

Consolidated footprint.

The sleek design and small footprint allows for easier access to patients and procedures, with effortless maneuvering around the clinic, and features one-step height adjustment for a range of users.

Immersive viewing experience.

Sonosite image clarity on a large portrait touchscreen display allows clinicians to perform soft-tissue assessments and communicate with the patient to demystify complications and treatment needs.

Vascular Access

Raising the bar for procedures.

When accuracy is essential, Sonosite ST aids clinicians in placing difficult peripheral IVs and central lines, helping them guide needle placement during procedures.

Workflow mastery.

With an intuitive user interface including integrated optimized exam types allowing clinicians to guide needle placement, easy system height adjustments, versatile storage, and a large easy-to-clean display — Sonosite ST is a proficient procedural partner.

Easy to use. Easier to learn.

A library of FUJIFILM Sonosite onboarding tools and scan-along tutorials await clinicians who utilize Sonosite ST for your ultrasound-training needs.

FUJIFILM SONOSITE
Value from Innovation

FUJIFILM Sonosite, Inc.
Worldwide Headquarters
21919 30th Drive SE, Bothell, WA 98021-3904
Tel: +1 (425) 951 1200 or +1 (877) 657 8050
Fax: +1 (425) 951 6800 sonosite.com

FUJIFILM Sonosite BV
European Headquarters
Joop Geesinkweg 140, 1114 AB
Amsterdam, Netherlands
Tel: +31 20 462 0000

Sonosite Worldwide Offices
FUJIFILM Sonosite Australasia Pty Ltd: Australia 1300 663 516
FUJIFILM Sonosite Australasia Pty Ltd: New Zealand 0800 888 204
FUJIFILM Sonosite Canada Inc. +1 888 554 5502
FUJIFILM Sonosite GmbH-Germany +49 69 80 88 40 30
FUJIFILM Sonosite Iberica SL-Spain +34 91 123 84 51
FUJIFILM Sonosite India Pvt Ltd +91 124 288 1100

Any patient. Anywhere. Anytime.

FUJIFILM Sonosite Ltd-United Kingdom +44 1462 341 151
FUJIFILM Sonosite SARL-France +33 182 880 702
FUJIFILM Asia Pacific Pte. Ltd. +65 6383 9933
FUJIFILM (China) Investment Co., Ltd +86 21 5010 6000
FUJIFILM Medical Co., Ltd.-Japan +81 3 0418 7190
FUJIFILM Middle East (FZE) +971 4 887 8722